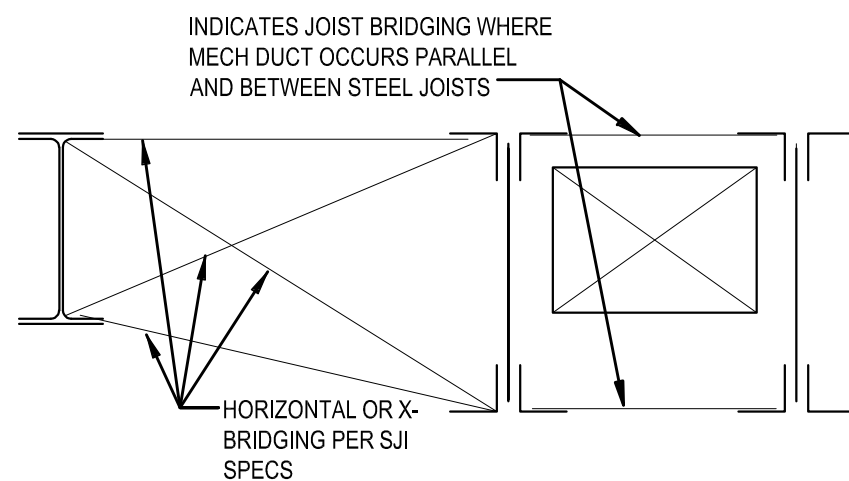
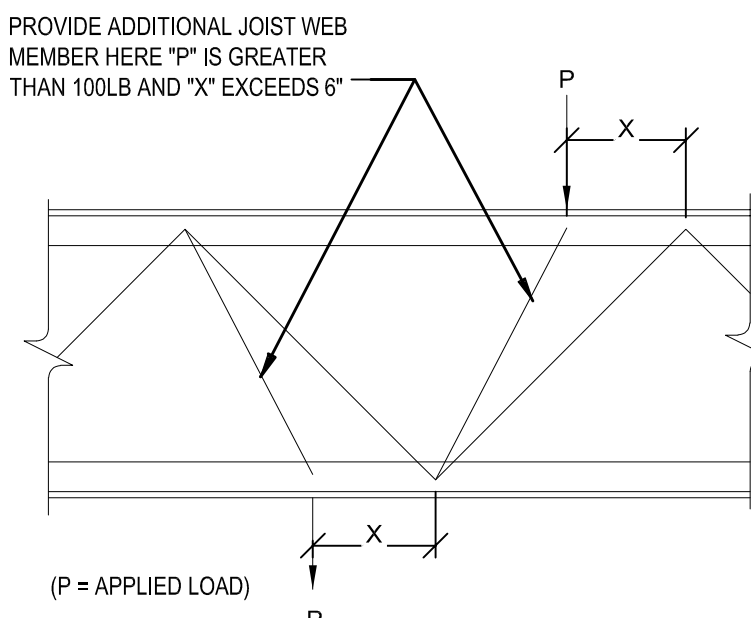


- TYPICAL EDGE SUPPORTS:**
1. ANGLE AT ADJACENT WALL
 2. ANGLE OR BENT PLATE AT EAVE
- NOTES:
1. DECK TO HAVE 36" NET COVERAGE
 2. NO. 12 SELF-TAPPING SCREWS MAY BE SUBSTITUTED IN LIEU OF PUDDLE WELDS
 3. USE NO. 12 SELF-TAPPING SCREWS (RECOMMENDED) WHEN SUPPORT IS COLD-FORMED FRAMING
 4. METAL DECK SHALL BE 20G MINIMUM UNLESS NOTED OTHERWISE.

TYPICAL METAL DECK

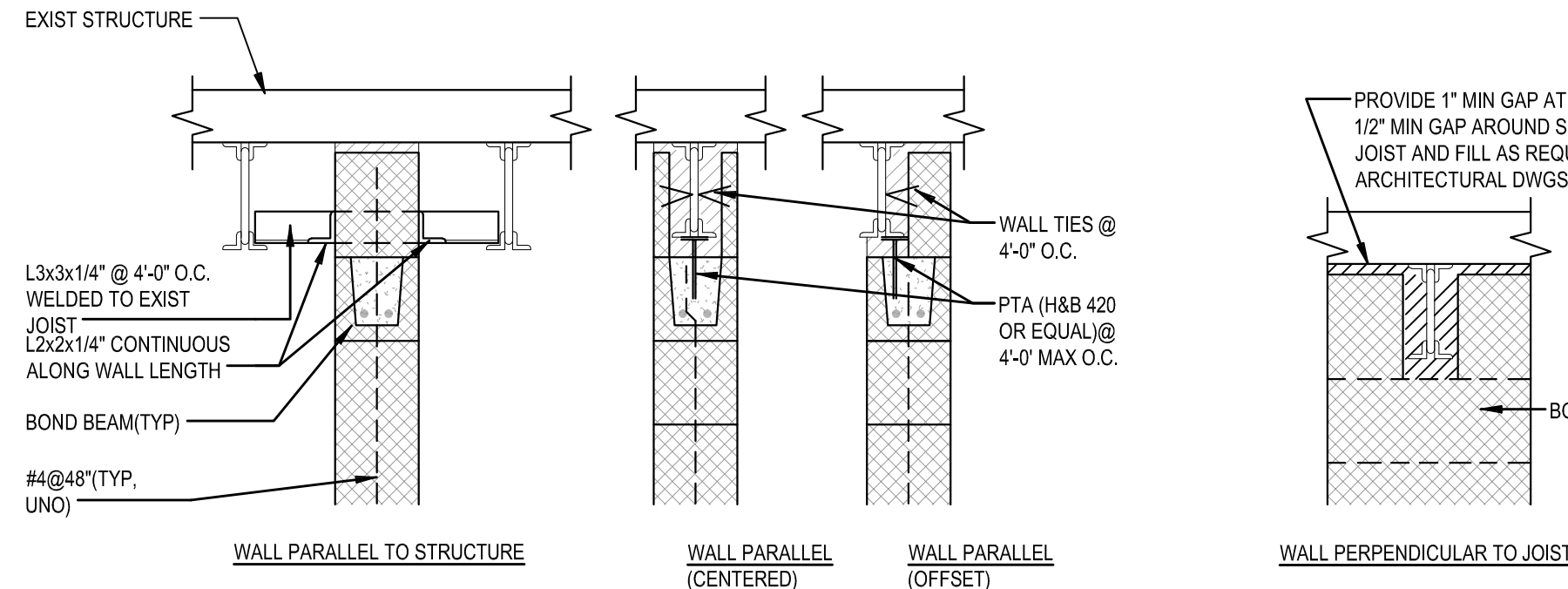


JOIST BRIDGING AT DUCT



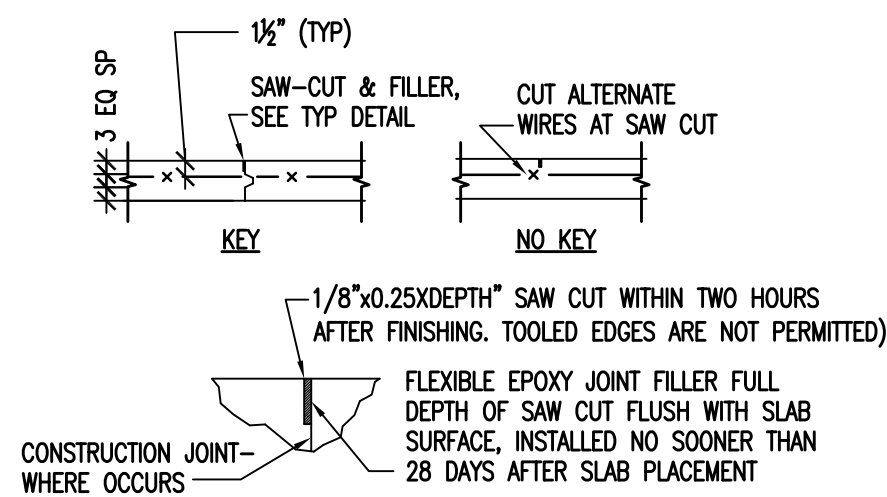
NOTE:
DETAIL APPLIES TO ALL CONCENTRATED LOADS APPLIED TO OR SUSPENDED FROM FLOOR JOISTS UNLESS INDICATED OTHERWISE. COORDINATE DETAIL WITH MECHANICAL, ELECTRICAL AND PLUMBING CONTRACTORS

JOIST REINFORCEMENT



NOTE:
DRILL AND SET VERTICAL WALL REINFORCING OR SPICED DOWEL INTO EXISTING OR NEW CONCRETE SLAB WITH 1" MIN. EPOXY (7" EMBED) WHILE JOISTS ARE SHOWN THE DETAIL IS ALSO INTENDED TO APPLY AT BEAM LOCATIONS. TO CLARIFY, THE TOPS OF ALL NON-BEARING CMU WALLS MUST BE BRACED AS SHOWN.

TOP OF CMU WALL SUPPORT DETAILS



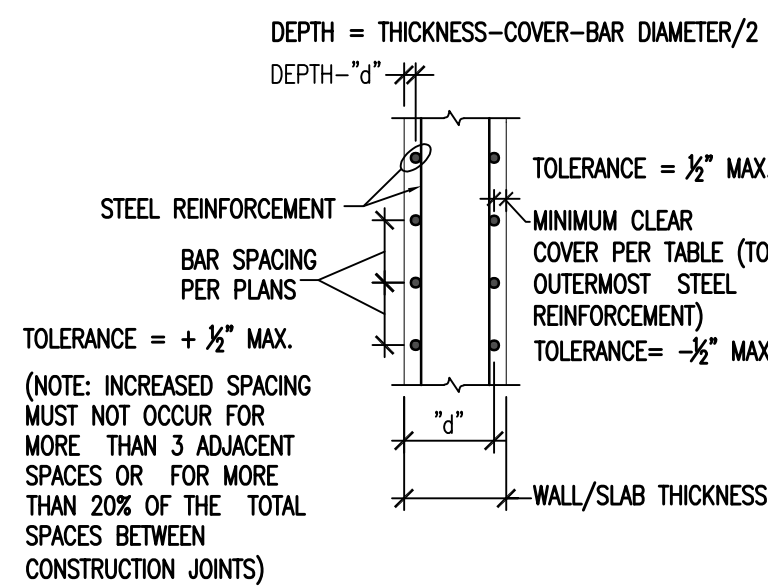
ENLARGED SAWCUT PLAN

U.N.O. LOCATE CONTROL JOINTS IN ALL SLABS ON GRADE AT A MAX SPACING OF:

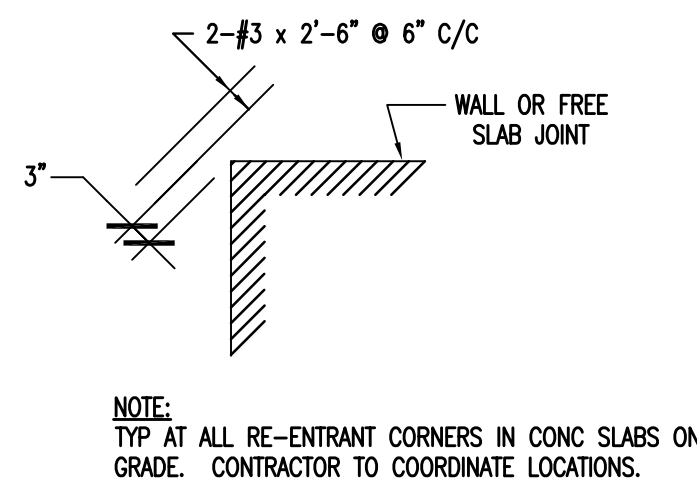
- 4" SLAB = 12' MAX
- 5" SLAB = 15' MAX
- 6" SLAB = 18' MAX
- 8" SLAB = 24' MAX

CONTROL JOINT PATTERNS SHALL NOT EXCEED A 1:5:1 LOW RATIO

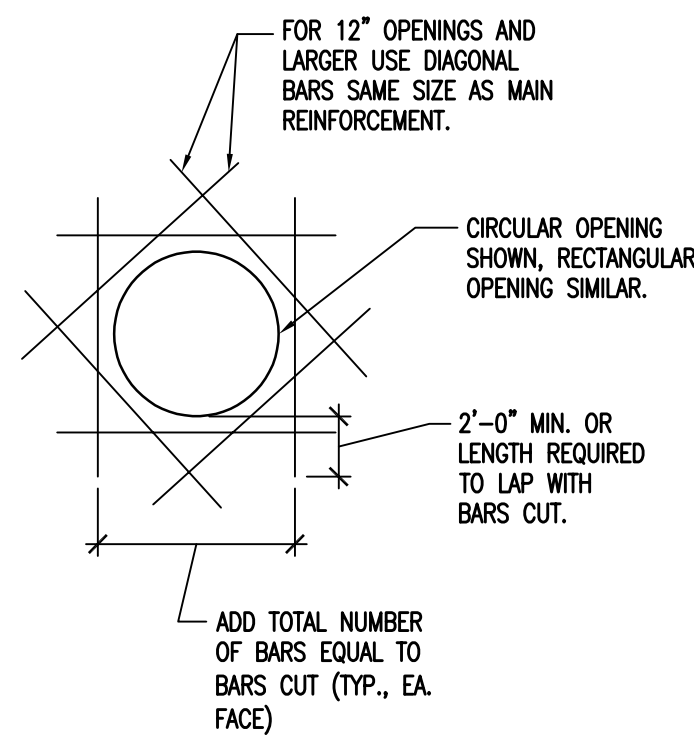
CONTROL JOINTS



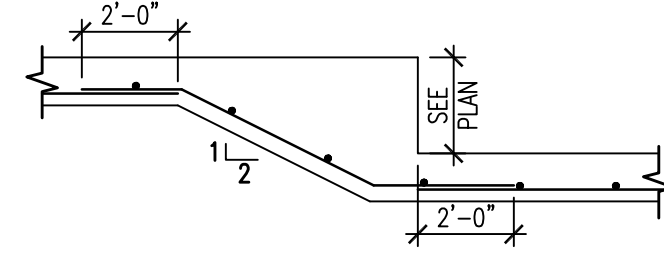
STEEL TOLERANCES



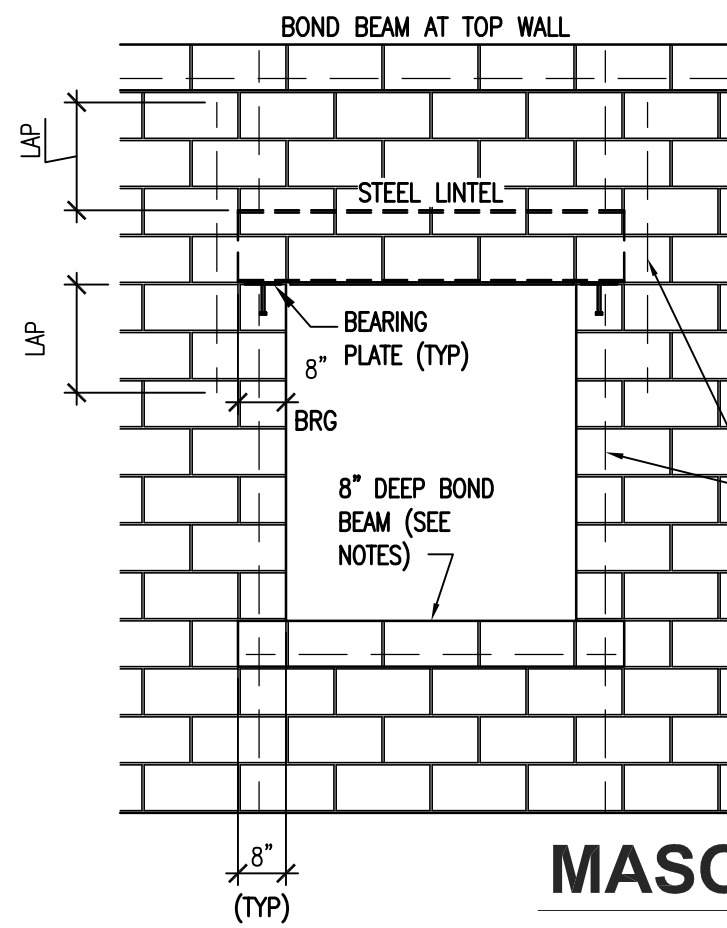
RE-ENTRANT CORNERS



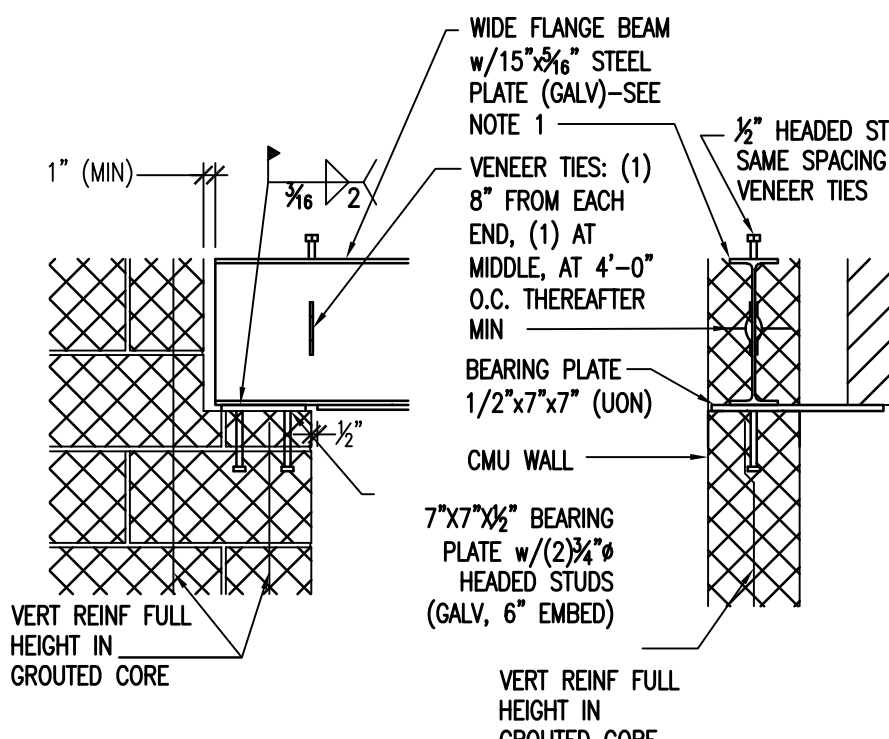
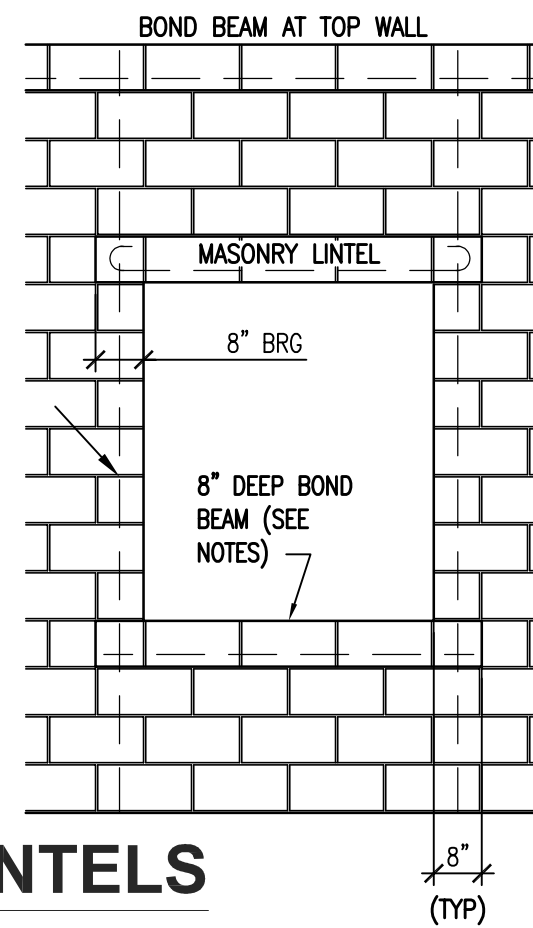
OPENING REINFORCEMENT



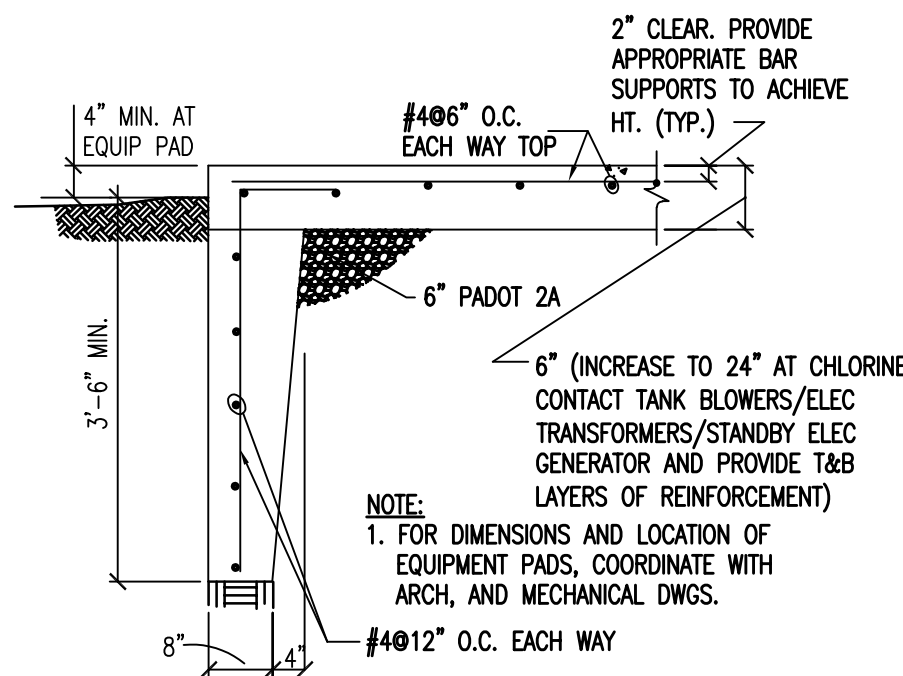
STEPPED FOOTING



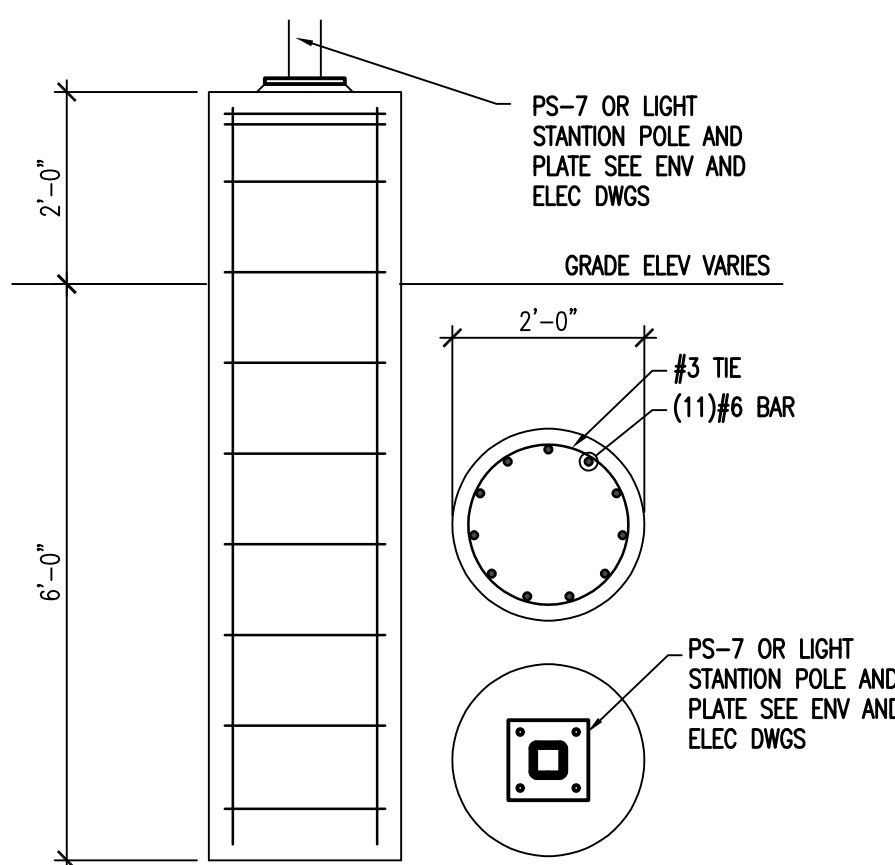
MASONRY WALL LINTELS



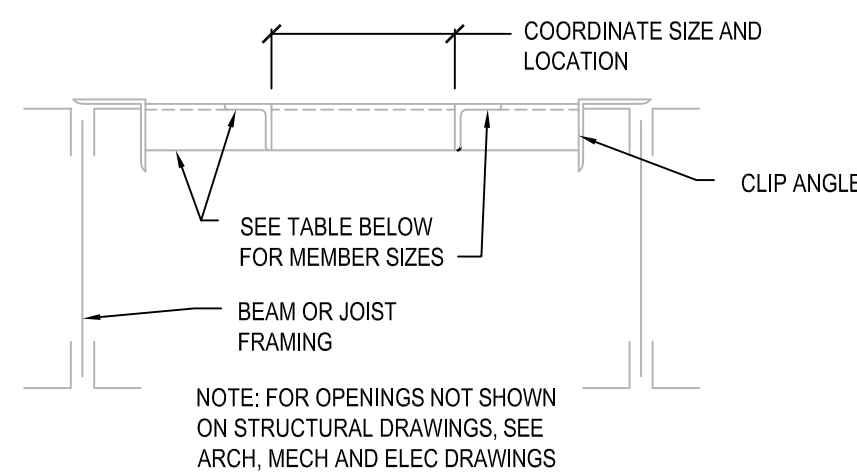
STEEL LINTELS



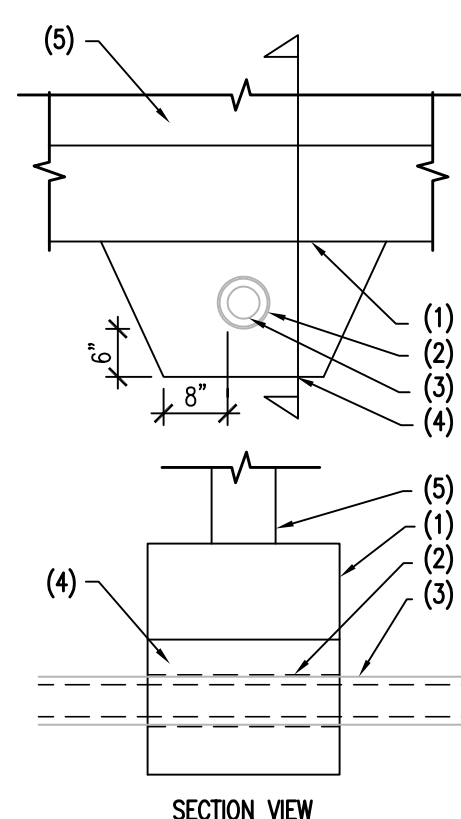
EXTERIOR PADS



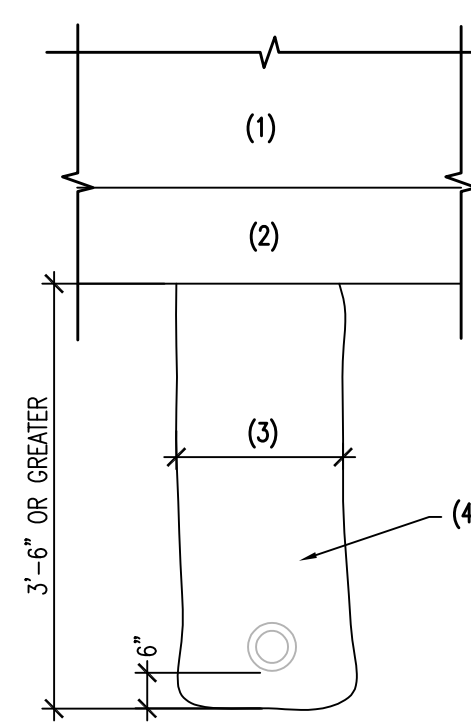
LIGHT POLE PIER



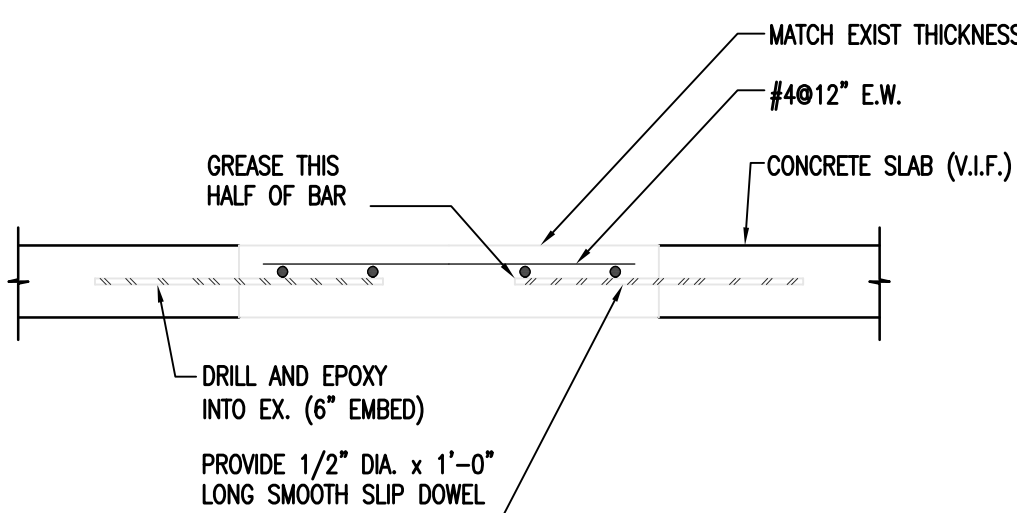
ROOF OPENING



SHALLOW PIPE TRENCH



DEEP PIPE TRENCH



SLAB INFILL

MASONRY WALL LINTEL SCHEDULE		
WALL TYPE	MASONRY OPENING	LINTEL
8" INTERIOR CMU	4'-0" OR LESS (L1)	8" WIDE x 8" DEEP BOND BEAM W/ (2) #5 BARS
	6'-8" OR LESS (GREATER THAN 4'-0") (L2)	W8x18 W/ CONT. PLATE 3/4"x7" WELDED TO BOTTOM FLANGE
	CONTINUOUS LINTEL ABOVE HOLDING CELL STOREFRONT (L3)	8" WIDE x 2'-8" DEEP BOND BEAM W/ (2) #5 BARS T&B AND #3 TIES @ 16" O.C.
14" EXIST EXTERIOR CAVITY WALL	8'-0" OR LESS (L4)	W8x24 W/ CONT. PLATE 3/4"x13 1/2" WELDED TO BOTTOM FLANGE
16" EXTERIOR CAVITY WALL	8'-0" OR LESS (L5)	W8x24 W/ CONT. PLATE 3/4"x15" WELDED TO BOTTOM FLANGE
OVERHEAD DOOR A106 AND A107	20'-0" OR LESS (L6)	W8x67 W/ CONT. PLATE 3/4"x15" WELDED TO BOTTOM FLANGE

GENERAL LINTEL NOTES:

ALL LINTELS SHALL BE GALVANIZED

PROVIDE 7"x7"x1/2" W/ (2) 3/4"x10" HEADED STUDS (8" EMBED) WELDED TO BOTTOM AT ALL STEEL BEAM LINTELS, U.N.O. (SEE SCHEDULE)

UNLESS OTHERWISE NOTED, PROVIDE LINTELS OVER ALL OPENINGS LARGER THAN 1'-0" IN MASONRY WALLS AND PARTITIONS

ALL LOOSE ANGLE LINTELS SHALL HAVE A MIN. BEARING OF 6" ON MASONRY. ALL BEAM SECTIONS USED AS LINTELS SHALL HAVE A MIN. BEARING OF 8"

ALL WALL BEARING BEAMS AND BEAM LINTELS TO HAVE BEARING PLATES & HEADED STUD ANCHORS UNLESS OTHERWISE NOTED. SEE TYPICAL BEAM BEARING DETAIL