

GENERAL NOTES

1. KEY NOTES BELOW REFER TO .4 ELECTRICAL RENOVATION WORK ON LOWER PARKING LEVEL (P2).
2. REFER TO DETAIL 02/E211 FOR KEY NOTE LOCATIONS AND DETAILS 01 & 01K/E211 FOR .4 ELECTRICAL DEMOLITION WORK.
3. REFER TO DRAWING A214Ar FOR ARCHITECTURAL RENOVATION WORK FOR THIS AREA.
4. COORDINATE ALL RENOVATION WORK WITH THE .1 GENERAL CONTRACTOR.

INFORMATIONAL KEY NOTES

- 01** FOR THE DURATION OF THE CONSTRUCTION ACTIVITIES, THE .1 GENERAL CONTRACTOR SHALL PRESERVE AND PROTECT ALL EXISTING CONDITIONS TO REMAIN AND SHALL ENSURE THE BUILDING'S OCCUPANTS MAY SAFELY USE SPACES IN THE AREAS OF THE BUILDING NOT BEING RENOVATED.

KEY NOTES FOR .4 ELECTRICAL CONTRACT - LIGHTING & POWER

- E1** PROVIDE 120V POWER CONNECTION TO CABINET UNIT HEATER FAN MOTOR BY EXTENDING CONDUIT/WIRE FROM EXISTING CABINET UNIT HEATER LOCATION. REFER TO DEMOLITION PLAN AT RIGHT.
- E2** PROVIDE NEW 1½" CONDUIT WITH (3) #4AWG + #6G AND NEW 40A/2P 208V 1P CIRCUIT BREAKER IN EXISTING SPACES IN PANEL 'XC'.
- E3** REMOVE (2) 20A/1P CIRCUIT BREAKERS AT PANEL 'XC' AND PROVIDE A 20A/2P 208V 1P CIRCUIT BREAKER.
- E4** PROVIDE 3" CONDUIT WITH TWO SETS OF (4) #4AWG + #6G TO SOUTH MDP AT ELECTRICAL ROOM P117E. REFER TO DRAWING E202.
- E5** PROVIDE NEW 90A/3P DISCONNECT SWITCH.
- E6** POWER FROM EXISTING LIGHTING CIRCUIT.
- E7** FOR ELEVATOR CAR LIGHTS TO CIRCUIT 4 IN PANEL 'XC' LOCATED EAT ELECTRICAL ROOM M43e ON CONCOURSE LEVEL.
- E8** PROVIDE CONDUIT WITH (4) #4 AWG + #6 G. FEEDER FOR ELEVATOR HYDRAULIC PUMP.

- E9** NEW POWER RECEPTACLE. CIRCUIT AS NEEDED.
- E10** MINI-SPLIT AIR CONDITIONING UNIT BY .2 MECHANICAL/HVAC CONTRACTOR.
- E11** MINI-SPLIT AIR CONDITIONING CONDENSER BY .2 MECHANICAL/HVAC CONTRACTOR.
- E12** PROVIDE DISCONNECT SWITCH.
- E13** PROVIDE 120V POWER CONNECTION TO CABINET UNIT HEATER FAN MOTOR. CIRCUIT FROM EXISTING CIRCUIT SERVING EXISTING CABINET UNIT HEATERS.
- E14** POWER NEW RECEPTACLE FROM EXISTING LOCAL RECEPTACLE CIRCUIT.
- E15** RECONNECT CABINET UNIT HEATER FAN TO EXISTING CIRCUIT.
- E16** PROVIDE JUNCTION BOX WITH 120V EMERGENCY POWER FOR ELEVATOR CONTROLLER BATTERY CHARGER.
- E17** PROVIDE ¾" CONDUIT WITH 2#12 + #12G TO SPARE 20A CIRCUIT BREAKER IN PANEL 'EM-2'. REFER TO DRAWING E202 FOR ADDITIONAL INFORMATION.
- E18** PROVIDE 2" CONDUIT RISER WITH SINGLE MODE 12-STRAND FIBER.
- E19** PROVIDE 2" CONDUIT TO ABOVE SUSPENDED METAL CEILING IN PARKING GARAGE.
- E20** PROVIDE SINGLE MODE 12-STRAND FIBER (PLENUM RATED) RUN ON J-HOOKS TO DATA ROOM M25E.

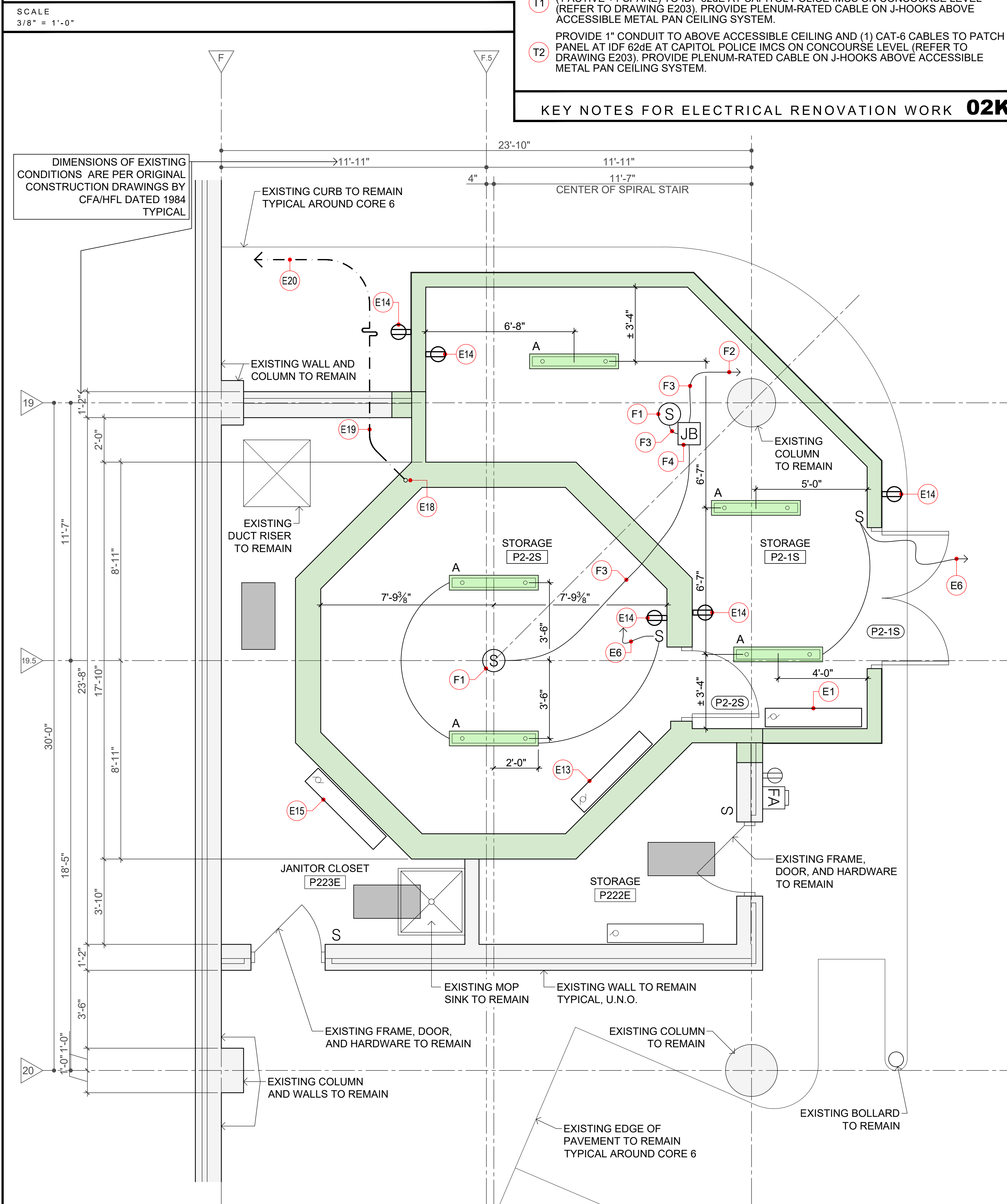
KEY NOTES FOR .4 ELECTRICAL CONTRACT - FIRE ALARM

- F1** PROVIDE MODEL FD-00421 SMOKE DETECTOR WITH DB-11 BASE AS MFR'D BY SIEMENS.
- F2** EXISTING FIRE ALARM CABLE LOOP TO REMAIN.
- F3** FIRE ALARM CABLE IN CONDUIT.
- F4** PROVIDE JUNCTION BOX TO INTERCEPT EAST FIRE ALARM CABLE LOOP.

KEY NOTES FOR .4 ELECTRICAL CONTRACT - TELECOMMUNICATIONS

- T1** FOR ELEVATOR EMERGENCY COMMUNICATION SYSTEM, PROVIDE (2) CAT-6 CABLES (1 ACTIVE +1 SPARE) TO IDF 62dE AT CAPITOL POLICE IMCS ON CONCOURSE LEVEL (REFER TO DRAWING E203). PROVIDE PLENUM-RATED CABLE ON J-HOOKS ABOVE ACCESSIBLE METAL PAN CEILING SYSTEM.
- T2** PROVIDE 1" CONDUIT TO ABOVE ACCESSIBLE CEILING AND (1) CAT-6 CABLES TO PATCH PANEL AT IDF 62dE AT CAPITOL POLICE IMCS ON CONCOURSE LEVEL (REFER TO DRAWING E203). PROVIDE PLENUM-RATED CABLE ON J-HOOKS ABOVE ACCESSIBLE METAL PAN CEILING SYSTEM.

KEY NOTES FOR ELECTRICAL RENOVATION WORK **02K**



SCALE 3/8" = 1'-0" CORE 6 - LOWER PARKING LEVEL P2 FLOOR PLAN - ELECTRICAL RENOVATION **02**

GENERAL NOTES

1. KEY NOTES BELOW REFER TO .4 ELECTRICAL DEMOLITION WORK ON THE LOWER PARKING LEVEL (P2).
2. REFER TO DETAIL 01/E211 FOR KEY NOTE LOCATIONS AND DETAILS 02K & 02/E211 FOR .4 ELECTRICAL RENOVATION WORK.
3. REFER TO DRAWING A214Ad FOR ARCHITECTURAL DEMOLITION WORK FOR THIS AREA.
4. COORDINATE ALL DEMOLITION WORK WITH THE .1 GENERAL CONTRACTOR.

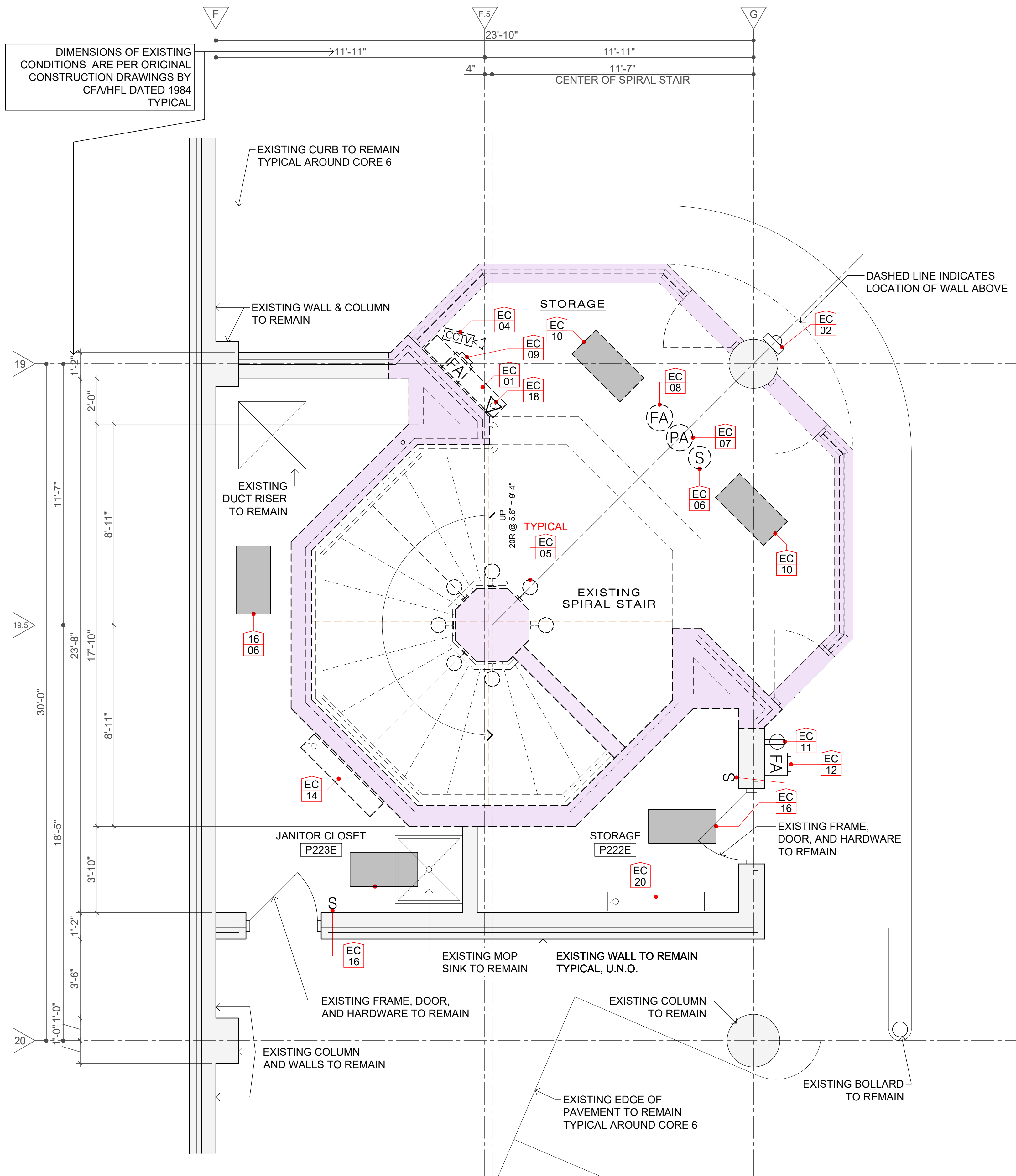
INFORMATIONAL KEY NOTES

- ALL** NO DEMOLITION WORK FOR THE FIRE PROTECTION SYSTEM IN THIS AREA.
- 01** PRESERVE AND PROTECT ALL EXISTING CONDITIONS TO REMAIN.

KEY NOTES FOR .4 ELECTRICAL CONTRACT

- EC 01** REMOVE POWER CONNECTION TO CABINET UNIT HEATER FAN. PROVIDE JUNCTION BOX FOR WIRE. REFER TO RENOVATION PLAN FOR NEW CABINET UNIT HEATER LOCATION.
- EC 02** EXISTING EMERGENCY CALL STATION TO REMAIN.
- EC 03** REMOVE POWER CONNECTION TO RECESSED TROUGH LIGHT FIXTURES. PULL WIRE BACK TO NEXT DEVICE. REMOVE CONDUIT. FIXTURES TO BE DEMOLISHED ALONG WITH CEILING BY .1 CONTRACTOR.
- EC 04** REMOVE CCTV CAMERA AND TURN OVER TO CLIENT AGENCY. PULL WIRE BACK TO NEXT DEVICE. REMOVE ALL ABOVE-CEILING CONDUIT AFTER CEILING IS DEMOLISHED.
- EC 05** REMOVE LED LIGHT FIXTURES AND TURN OVER TO CLIENT AGENCY. FROM PARKING P2 TO PARKING P1 THERE ARE 9 FIXTURES. FROM PARKING LEVEL P1 TO CONCOURSE THERE ARE 16 FIXTURES. FROM CONCOURSE TO LEVEL 1 THERE ARE 11 FIXTURES.
- EC 06** REMOVE EXISTING SMOKE DETECTOR AND TURN OVER TO CLIENT AGENCY. PULL WIRE BACK TO NEXT DEVICE AND REMOVE CONDUIT.
- EC 07** REMOVE EXISTING PUBLIC ADDRESS SPEAKER AND TURN OVER TO CLIENT AGENCY. PULL WIRE BACK TO NEXT DEVICE AND REMOVE CONDUIT.

SCALE 3/8" = 1'-0"



SCALE 3/8" = 1'-0" CORE 6 - LOWER PARKING LEVEL P2 FLOOR PLAN - ELECTRICAL DEMOLITION **01**

SCALE & DIMENSIONS

BAR IS ONE (1) INCH LONG ON ORIGINAL DRAWING
0 1
IF BAR IS NOT ONE (1) INCH LONG, ADJUST SCALE ACCORDINGLY. CONTRACTOR SHALL FIELD VERIFY ALL DIMENSIONS. VARIANCE FROM CONTRACT NOT PERMITTED WITHOUT BUREAU OF ENGINEERING AND ARCHITECTURE APPROVAL.

ALL WORK SHOWN ON THIS DRAWING IS INCLUDED IN BASE BID 01, UNLESS NOTED OTHERWISE ON THIS DRAWING.
REFER TO PROJECT MANUAL FOR FULL DESCRIPTION OF ALL BASE BIDS.

ELECTRICAL DEVICE LEGEND

- JB JUNCTION BOX
- S DISCONNECT SWITCH
- 120V DUPLEX POWER RECEPTACLE
- LIGHT FIXTURE/SCONCE
- EXISTING LIGHT FIXTURE
- LED LIGHT FIXTURE
- DPS DOOR POSITION SWITCH
- MLN MAGNETIC LOCK WITH DPS
- REX REQUEST TO EXIT DEVICE
- EMERGENCY CALL STATION
- CARD READER
- CCTV CAMERA
- S SMOKE DETECTOR
- PA PUBLIC ADDRESS SYSTEM SPEAKER
- FA FIRE ALARM NOTIFICATION DEVICE
- FA FIRE ALARM MANUAL PULL STATION
- FA FIRE ALARM AUDIO/VISUAL DEVICE

VITETTA PROJECT 4645.0000		© 2024 VITETTA
ALL DIMENSIONS MUST BE VERIFIED BY THE CONTRACTOR AND THE ARCHITECT NOTIFIED OF ANY DISCREPANCIES BEFORE PROCEEDING WITH THE CONSTRUCTION. DO NOT SCALE THE DRAWING.		
19	20	
17	18	
15	16	
13	14	
11	12	
09	10	
07	08	
05	06	
03	04	
01	02	
No.	DESCRIPTION	No. DESCRIPTION

AS-BUILT REVISIONS

VITETTA PROJECT 4645.0000		© 2024 VITETTA
ALL DIMENSIONS MUST BE VERIFIED BY THE CONTRACTOR AND THE ARCHITECT NOTIFIED OF ANY DISCREPANCIES BEFORE PROCEEDING WITH THE CONSTRUCTION. DO NOT SCALE THE DRAWING.		
19	20	
17	18	
15	16	
13	14	
11	12	
09	10	
07	08	
05	06	
03	04	
01	02	
No.	DESCRIPTION	No. DESCRIPTION

COMMONWEALTH OF PENNSYLVANIA
DEPARTMENT OF GENERAL SERVICES

HARRISBURG, PENNSYLVANIA

DGS PROJECT NUMBER
C-0948-0101 PHASE 001

CAPITOL EAST WING
REPLACEMENT OF ESCALATORS WITH ELEVATOR
HVAC DIFFUSERS & CAFETERIA UPGRADES

HARRISBURG, DAUPHIN COUNTY, PENNSYLVANIA

CONSULTANT
VITETTA
ARCHITECTURE | ENGINEERING | PLANNING
NOTHING PRESERVATION
645 NORTH 12TH STREET • SUITE 1003
LEMOYNE • PENNSYLVANIA • 17043

DRAWN BY
J. JOLIN

DATE
01.04.2024

DRAWING NUMBER
E211

CHECKED BY
D. VOZDZAK

SCALE
3/8" = 1'-0"