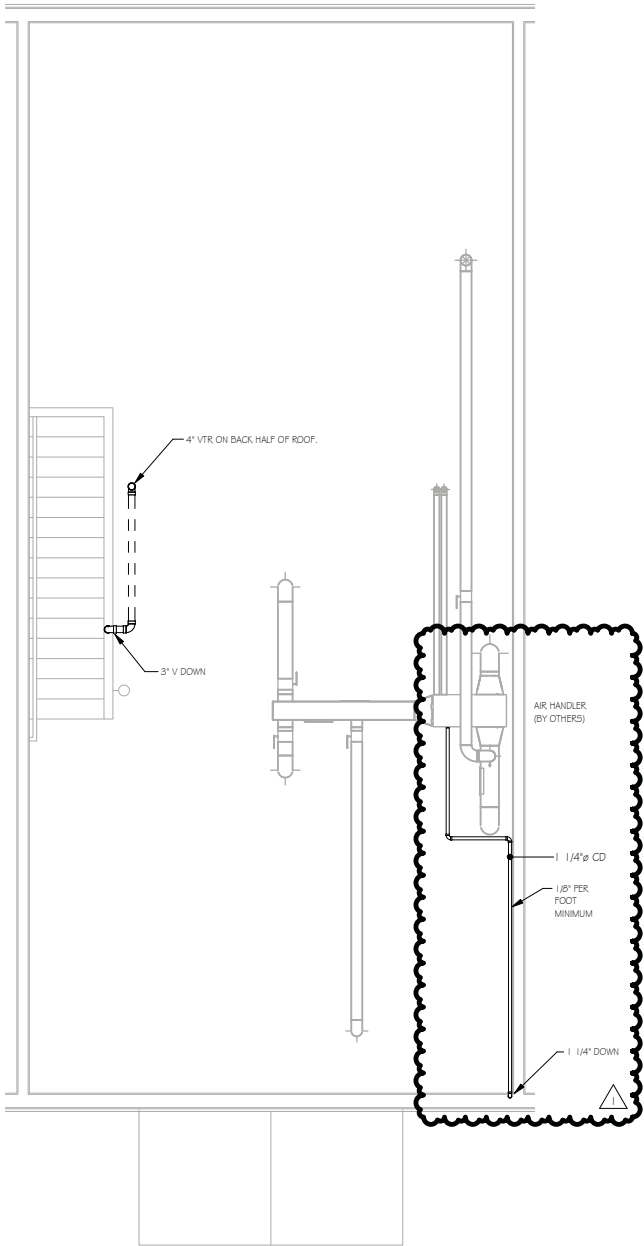


- GENERAL SHEET NOTES
- A. MAINTAIN SPACE FOR SERVICE AND MAINTENANCE OF EQUIPMENT.
 - B. PROTECT DRAINS DURING REMAINDER OF CONSTRUCTION PERIOD TO AVOID CLOGGING WITH DIRT AND DEBRIS AND TO PREVENT DAMAGE FROM TRAFFIC AND CONSTRUCTION WORK.
 - C. PLACE PLUGS IN ENDS OF UNCOMPLETED PIPING AT END OF DAY AND WHEN WORK STOPS.
 - D. INSTALL ISOLATION VALVES ON EACH BRANCH CONNECTION.
 - E. INSTALL SANITARY SLOPED AT MINIMUM SLOPE TO THE SITE INVERT CONNECTION FROM STARTING CONNECTION. MAINTAIN A MINIMUM OF 1/8" FALL PER FOOT.
 - F. USE A MINIMUM OF 2" OR GREATER PIPING BELOW GRADE FOR SANITARY.
 - G. ROUGH-IN PIPING SERVICES FOR FIXTURES, MOUNT FIXTURES ACCORDING TO CONTRACT DOCUMENTS, LOCAL CODES AND ADA REQUIREMENTS.
 - H. FURNISH AND INSTALL CLEANOUTS AT THE BASE OF EACH STACK.
 - I. REFER TO STRUCTURAL DRAWINGS FOR SEISMIC CLASSIFICATION FOR BUILDING. FURNISH AND INSTALL SEISMIC HANGERS AND SUPPORTS AS REQUIRED.



1 SECOND FLOOR PLAN - PLUMBING

SCALE: 1/4" = 1'-0"

0 1/2 1' 1 1/2'

1. CONDENSED	4/16/2024



GREEN BUILDING ENGINEERS
2548 Brandywine Lane, York, PA 17404
412-841-4901 717-554-0153



Digitally signed by Eric Huth
Date: 2024.01.11 14:07:43 -05'00'

426 S THIRD STREET
SUITE 101
LEMOYNE, PA 17043
717.920.2282
K3DESIGNSTUDIO.COM



K3 DESIGN STUDIO

STORAGE/MAINTENANCE BUILDING
SHIREMANSTOWN BOROUGH
201 RR E MAIN STREET
SHIREMANSTOWN BOROUGH, PA

SECOND FLOOR PLAN - PLUMBING

reproduction of the material herein or substantial use without written permission of K3 Design Studio, Inc. violates the Copyright Laws of the United States and will be subject to legal prosecution. Copyright 2024

DATE : 01/08/2024

SCALE : AS NOTED

JOB NO: 544-23

SHEET

P-102