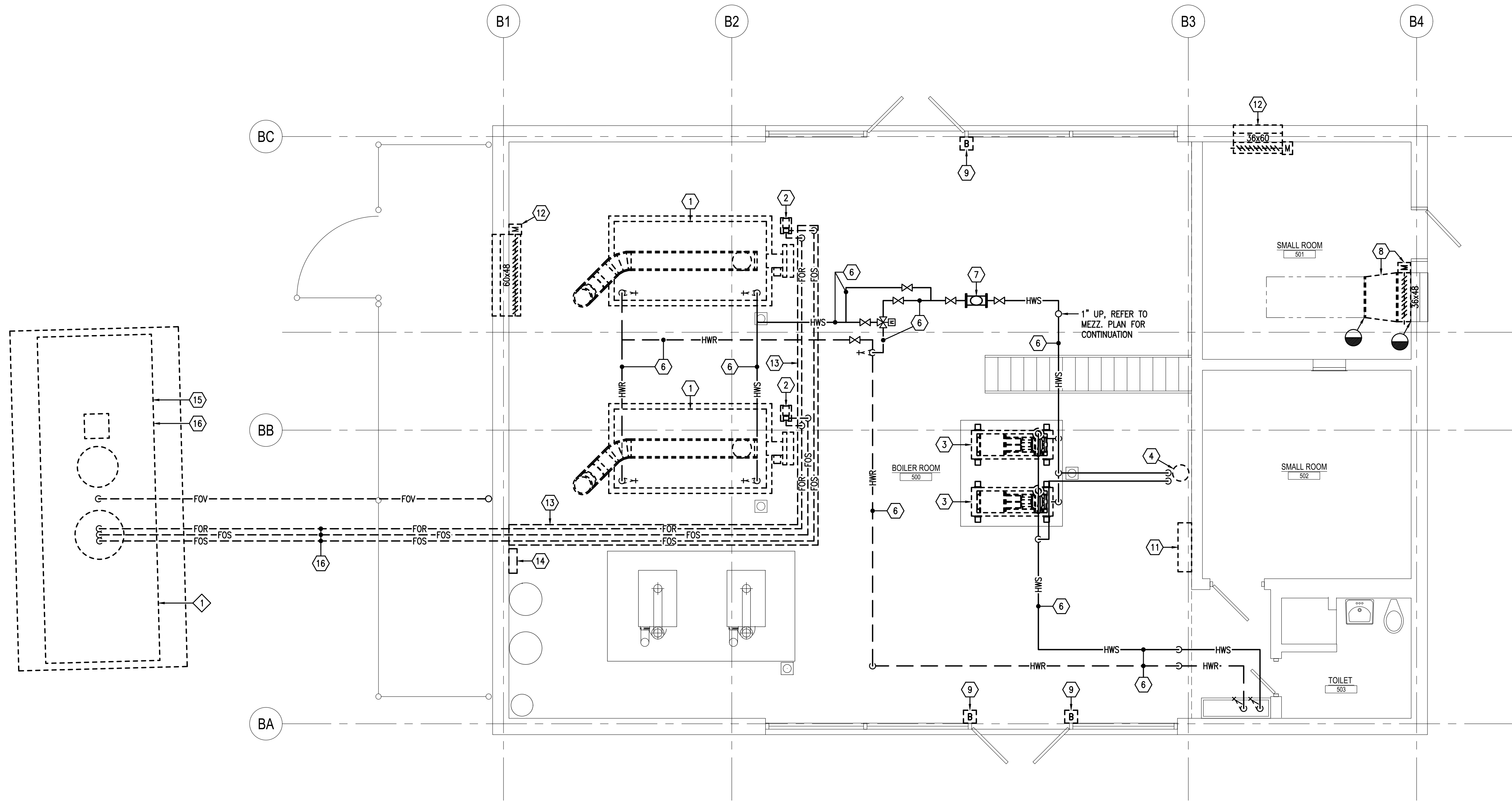


BOILER HOUSE MEZZANINE PLAN - HVAC DEMOLITION

SCALE: 1/4" = 1'-0"



BOILER HOUSE PLAN - HVAC DEMOLITION

SCALE: 1/4" = 1'-0"

THE DEMOLITION WORK INDICATED IS INTENDED TO ASSIST HVAC CONTRACTOR AND GIVE GENERAL INFORMATION. HVAC CONTRACTOR SHALL BE REQUIRED TO VISIT THE PROJECT SITE PRIOR TO BIDDING TO FULLY ACQUAINT HIMSELF WITH THE EXTENT OF ALL DEMOLITION WORK WHICH IS NECESSARY TO COMPLETE THE ALTERATIONS AND NEW CONSTRUCTION AS DESCRIBED IN THE CONTRACT DOCUMENTS. ALL DEMOLITION WORK REQUIRED SHALL BE INCLUDED IN THE CONTRACT PRICE WHETHER INDICATED ON THE DRAWING OR NOT. HVAC CONTRACTOR WILL NOT BE ENTITLED TO ANY CLAIMS FOR ADDITIONAL COMPENSATION RELATED TO REQUIRED DEMOLITION.

THE HVAC CONTRACTOR WILL BE RESPONSIBLE TO FOLLOW THE PROJECT PHASING SCHEDULE AND ONLY REMOVE SYSTEM COMPONENTS FROM AREAS OF THE PROJECT THAT ARE NO LONGER OCCUPIED AND ARE WITHIN THE CURRENT PHASING LIMITATIONS.

THE HVAC CONTRACTOR WILL NEED TO PROVIDE ALL REQUIRED ISOLATION VALVES AND TEMPORARILY HVAC CONNECTIONS NECESSARY TO KEEP THE EXISTING HEATING/COOLING SYSTEMS FULLY OPERATIONAL WITHIN THE OCCUPIED PORTIONS OF THE BUILDING THROUGHOUT THE ENTIRE LENGTH OF THE PROJECT.

GENERAL DEMOLITION NOTES:

1. THE HVAC CONTRACTOR SHALL COORDINATE THE SALVAGE AND DISPOSAL OF ALL EQUIPMENT AND MATERIAL WITH THE OWNER. THE HVAC CONTRACTOR SHALL RETURN TO THE OWNER ANY ITEMS NOTED OR NOT NOTED, ON THE DRAWINGS, AT THE OWNERS REQUEST, ALL REMAINING EQUIPMENT AND MATERIAL SHALL BE DISPOSED OF BY THE HVAC CONTRACTOR.
2. THE HVAC CONTRACTOR SHALL COORDINATE AND SCHEDULE ALL WORK IN CONJUNCTION WITH THE ARCHITECTURAL DRAWINGS AS REQUIRED TO ACCOMMODATE PROJECT PHASING.
3. REFER TO PROJECT PHASING DRAWING(S) AND SCHEDULE. PROVIDE ALL LABOR AND MATERIAL NECESSARY TO ACCOMMODATE PROJECT PHASING.
4. ALL PATCHING AND REPAIRING OF SURFACES AND HOLES LEFT OPEN DUE TO DEMOLITION OR REMOVAL OF EXISTING PIPING, DUCTWORK AND EQUIPMENT SHALL BE THE RESPONSIBILITY OF THE HVAC CONTRACTOR. PATCH EXISTING CONSTRUCTION AS REQUIRED TO MATCH ADJACENT SURFACES OR TO RECEIVE NEW FINISHES AS SCHEDULED UNLESS OTHERWISE INDICATED ON THE ARCHITECTURAL DRAWING.
5. THE HVAC CONTRACTOR IS RESPONSIBLE FOR ALL CUTTING AND PATCHING REQUIRED TO COMPLETE ALL INDICATED WORK.
6. THE HVAC CONTRACTOR IS RESPONSIBLE FOR ALL EXCAVATION AND BACKFILLING NOT INDICATED TO BE PROVIDED BY THE GENERAL CONTRACTOR ELSEWHERE IN THE DOCUMENTS THAT IS REQUIRED TO COMPLETE ALL INDICATED HVAC WORK.
7. ALL EXISTING PIPING, DUCTWORK AND EQUIPMENT SHOWN MUST BE VERIFIED IN THE FIELD. ANY HVAC EQUIPMENT NOT SHOWN SHALL BE BROUGHT TO THE ENGINEERS ATTENTION PRIOR TO REMOVAL.
8. REMOVE ALL EXISTING CONCRETE EQUIPMENT PADS LOCATED BENEATH ALL DEMOLISHED EQUIPMENT, UNLESS OTHERWISE NOTED.
9. ALL SALVAGED EQUIPMENT MUST BE STORED BY THE CONTRACTOR IN A WEATHER TIGHT AND HEATED ENCLOSURE. CAP ALL FITTINGS AND OR EQUIPMENT OPENINGS TO PREVENT DEBRIS FROM ENTERING THE DEVICE WHILE IN STORAGE.
10. HVAC CONTRACTOR MUST COORDINATE ROOF MOUNTED EQUIPMENT REMOVAL WITH ROOFING CONTRACTOR. IF HVAC CONTRACTOR CHOOSES TO REMOVE ROOF MOUNTED EQUIPMENT PRIOR TO ROOFING CONTRACTOR BEING READY TO PATCH ROOF, HVAC CONTRACTOR MUST TEMPORARILY COVER REMAINING ROOF CURB WEATHER TIGHT.
11. PRIOR TO REMOVAL OF ANY EXISTING HVAC EQUIPMENT THAT CONTAINS REFRIGERANT THE HVAC CONTRACTOR SHALL REMOVE AND RECOVER THE ENTIRE CONTENT OF THE REFRIGERANT AND ALL ASSOCIATED OIL IN THE EXISTING EQUIPMENT. ALL REFRIGERANT/OIL RECOVERY EQUIPMENT IS REQUIRED TO BE CERTIFIED BY AN EPA-APPROVED TESTING ORGANIZATION TO ASSURE THAT THE EQUIPMENT MEETS EPA STANDARDS BASED ON THE TESTING METHOD ESTABLISHED BY AHR STANDARD 740. REMOVAL OF ALL CFC AND HCFC REFRIGERANTS MUST CONFORM TO THE REQUIREMENTS OF THE ENVIRONMENTAL PROTECTION AGENCY. ALL WORK IS TO BE PERFORMED BY AN EPA CERTIFIED TECHNICIAN.
12. WHERE EVER EXISTING CONCRETE EQUIPMENT PADS ARE REMOVED, THE FLOOR MUST BE RE-FINISHED COMPLETELY SMOOTH TO MATCH ALL EXISTING ADJACENT SURFACES WITH NO STEPS OR DIPS.

KEYED DEMOLITION NOTES:

- 1 REMOVE EXISTING BOILER, BURNER, CONCRETE EQUIPMENT PAD, BREECHING AND ALL ASSOCIATED PIPING, VALVES, INSULATIONS, HANGERS, SUPPORTS AND CONTROLS IN THEIR ENTIRETY.
- 2 REMOVE EXISTING FUEL OIL TRANSFER PUMP ASSEMBLY AND ALL ASSOCIATED FUEL OIL SUPPLY, RETURN AND VENT PIPING, HANGERS, SUPPORTS AND CONTROLS IN THEIR ENTIRETY.
- 3 REMOVE EXISTING BASE MOUNTED PUMP AND ALL ASSOCIATED PIPING, VALVES, INSULATIONS, HANGERS, SUPPORTS, CONTROLS IN THEIR ENTIRETY. EXISTING CONCRETE EQUIPMENT PAD SHALL REMAIN FOR REUSE.
- 4 REMOVE EXISTING SHOT FEEDER AND ALL ASSOCIATED PIPING, INSULATION, VALVES, SUPPORTS AND HANGERS IN THEIR ENTIRETY.
- 5 REMOVE EXISTING EXPANSION TANK AND ALL ASSOCIATED PIPING, VALVES, INSULATIONS, HANGERS AND SUPPORTS IN THEIR ENTIRETY.
- 6 REMOVE EXISTING HEATING SYSTEM PIPING, VALVES, INSULATION, HANGERS AND SUPPORTS IN THEIR ENTIRETY.
- 7 REMOVE EXISTING AIR SEPARATOR, VENT AND ALL ASSOCIATED PIPING, VALVES, INSULATIONS, HANGERS AND SUPPORTS IN THEIR ENTIRETY.
- 8 EXISTING WALL MOUNTED LOUVER AND ASSOCIATED WALL SLEEVE SHALL REMAIN FOR REUSE. REMOVE EXISTING MOTOR OPERATED DAMPER AND ALL ASSOCIATED CONTROLS AND DUCTWORK BACK TO POINT INDICATED IN ITS ENTIRETY.
- 9 REMOVE EXISTING BOILER/WATER HEATER SAFETY SHUT-OFF SWITCH AND ALL ASSOCIATED CONDUIT AND WIRING IN ITS ENTIRETY.
- 10 REMOVE EXISTING MAKE-UP WATER PIPING AND ALL ASSOCIATED INSULATION, VALVES, HANGERS AND SUPPORTS BACK IN THEIR ENTIRETY BACK TO POINT INDICATED.
- 11 REMOVE EXISTING ATC PANEL AND ALL ASSOCIATED CONDUITS AND WIRING IN ITS ENTIRETY.
- 12 REMOVE EXISTING EXTERIOR WALL LOUVER AND ALL ASSOCIATED DUCTWORK, DAMPERS AND CONTROLS IN THEIR ENTIRETY. G.C. TO INFILL AND PATCH REMAINING WALL OPENING.
- 13 REMOVE ALL EXISTING FUEL OIL TRENCH COVER PLATES, ASSOCIATED STEEL PERIMETER FRAMES, FUEL OIL SUPPLY AND RETURN PIPING AND ALL PIPE SUPPORTS IN THEIR ENTIRETY. THOROUGHLY CLEAN INTERIOR OF PIPE TRENCH AFTER PIPING REMOVAL IS COMPLETE. PROVIDE 1" STEEL DOWELS DRILLED INTO INTERIOR SIDES OF REMAINING TRENCH 4" DOWN FROM FINISHED FLOOR ON 1'-6" CENTERS AND EPOXY THE DOWELS IN PLACE. FILL REMAINING TRENCH WITH CONCRETE AND PATCH TO MATCH EXISTING FINISHED FLOOR COMPLETELY SMOOTH WITH NO DIPS OR STEPS.
- 14 REMOVE EXISTING WALL MOUNTED UNDERGROUND FUEL OIL TANK LEVEL/LEAK DETECTION MONITORING PANEL AND ALL ASSOCIATED WIRING, CONTROLS AND CONDUITS IN THEIR ENTIRETY.
- 15 PRIOR TO REMOVAL OF EXISTING 10,000 GALLON UNDERGROUND FUEL OIL STORAGE TANK, HVAC CONTRACTOR SHALL PERFORM GROUND PENETRATING RADAR (GPR) SCANS OF ENTIRE AREA TO BE EXCAVATED. REFER TO PROJECT SITE UTILITY PLAN FOR LOCATIONS OF EXISTING UNDERGROUND UTILITIES THAT MUST BE AVOIDED. CLEARLY IDENTIFY ANY UNDERGROUND UTILITY DISCREPANCIES THAT ARE FOUND DURING THE GPR SCANS AND REPORT THESE TO THE ARCHITECT AND ENGINEER. HVAC CONTRACTOR WILL BE FINANCIALLY RESPONSIBLE TO REPAIR OR REPLACE ANY UNDERGROUND SITE UTILITIES DAMAGED DURING TANK EXCAVATION, IF SUCH AN EVENT OCCURS.
- 16 REMOVE EXISTING 10,000 GALLON UNDERGROUND FUEL OIL STORAGE TANK AND ALL ASSOCIATED FUEL OIL SUPPLY, RETURN AND VENT PIPING, CONTROLS, CONDUITS, LEVEL SENSORS, MANWAYS AND CONCRETE PADS ABOVE AND BELOW TANK IN THEIR ENTIRETY. REFER TO FUEL OIL TANK EXCAVATION DETAIL 4 SHOWN ON DRAWING H-5 FOR EXCAVATION AND REMOVAL REQUIREMENTS.

KEYED DRAWING NOTES:

- 1 BACKFILL EXCAVATED FUEL OIL TANK PIT AREA WITH STRUCTURAL FILL IN COMPACTED 8" LIFTS, FINISH WITH 12" OF 2A MODIFIED CRUSHED STONE AND FULLY COMPACT OVER ENTIRE AREA THAT WAS DISTURBED DURING TANK REMOVAL.

CONSOLIDATED
ENGINEERS

CIE



AEM ARCHITECTS INC.
3700 PERKIDOMEN AVENUE, READING, PA 19606-2785
Phone: 610.779.3220
Fax: 610.779.8022
www.aem-arch.com

BOILER HOUSE PLAN - HVAC DEMOLITION
RENOVATIONS TO THE COCALICO MIDDLE SCHOOL
COCALICO SCHOOL DISTRICT
SOUTH 4TH STREET, DENVER BOROUGH, LANCASTER COUNTY PA

ALL DIMENSIONS AND EXISTING CONDITIONS
shall be CHECKED AND VERIFIED
by the CONTRACTOR at the SITE.

JOB NO.: 23001.00
DRAWN BY: RLC
DATE: 04.12.24

H-8